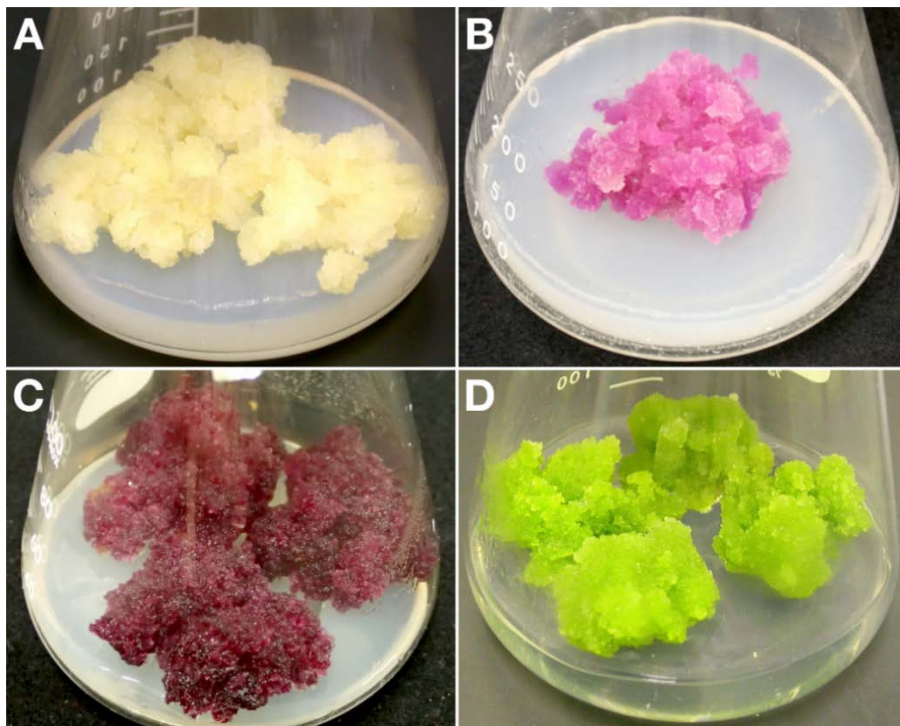


# User's Guide

## Plant Resources in RIKEN BRC Stock

(2019)



Colorful plant cell cultures

A: rpc00007 *Phytolacca americana* PAW

B: rpc00006 *Phytolacca americana* PAR (betacyanins)

C: rpc00058 *Glehnia littoralis* GIV (anthocyanins)

D: rpc00051 *Glycine max* DG330 (isoflavones)



Experimental Plant Division  
RIKEN BioResource Research Center



## 1. Project Summary

RIKEN BioResource Research Center collects, preserves and distributes biological materials of model organisms to promote the life sciences. Since 2002, we have provided Arabidopsis mutants/natural accessions, plant cultured cells and DNA materials to the international plant research community. Resources of experimental monocot plant, *Brachypodium distachyon* are also distributed.

## 2. Ordering Procedure

### 2-1. Orders

At the time of ordering our biological resources, please inform us your name, institution, mailing and e-mail addresses. If you are a student or postdoc, information of your laboratory head is also required. In order to make your order, follow the instructions on our website or please enquire by e-mail.

### 2-2. Quality Control

We perform quality control on the resources prior to shipping your order. We will inform you for the results when we find any problem. See more details at our website. [https://epd.brc.riken.jp/en/quality\\_control](https://epd.brc.riken.jp/en/quality_control).

### 2-3. Shipments

We send 50 or 400 seeds for each Arabidopsis line, 100 ng of plasmid DNA for each DNA material, and enough amounts of cultured cells placed on agar plates. They are usually shipped within one month after we receive your order.

### 2-4. User Fees

We ask the recipients to bear all shipping and handling costs. The fees for biological materials are shown in the fee table.

### 2-5. Billing and Payment Information

BRC invoices are emailed to you when we are ready to ship, often after performing quality control. We accept any of credit card payment, electronic transfers, and check. Your payment ensures that the Experimental Plant Division ships your order.

## 3. Contact Information

**Experimental Plant Division**  
**RIKEN BioResource Research Center**  
3-1-1 Koyadai, Tsukuba, Ibaraki 305-0074, Japan  
FAX: +81-29-836-9053  
E-mail: [plant@brc.riken.jp](mailto:plant@brc.riken.jp)  
HP: <https://epd.brc.riken.jp/en/>

---

When you utilize our resources and publish the results of your research, please refer to the origin of the resources. Your cooperation is much appreciated.

## Fees for Biological Materials

As of November 2019

Resource Name	Not-for-profit academic purpose <sup>(*1)</sup>	For-profit-research purpose <sup>(*2)</sup>
Arabidopsis seed		
Individual seed stock (50 seeds per line)(*3)	¥4,000	¥8,000
Individual seed stock (400 seeds per line)(*3)	¥7,000	¥14,000
Set of individual seed stocks (100 lines)	¥180,300	¥360,600
Set of individual seed stocks (set of 50 lines from each seed pool)	¥91,800	¥183,600
Set of pooled seeds for screening (per pool set)(*3)	¥7,000	¥14,000
Brachypodium seed		
Individual seed stock (50 seeds per line)(*3)	¥6,200	¥12,400
Plant DNA		
Individual plant DNA (per clone)(*3)	¥4,600	¥9,200
Set of individual plant DNA (per 100 clones)	¥264,200	¥528,400
Arabidopsis DNABook™ (per volume)(*4)	¥36,300	-
Plant cell culture (per line)(*4)	¥7,200	¥14,400
Service		
Quarantine certificate (per certificate)	¥16,900	¥16,900
Culture media for cell suspension subculture (per unit)	¥1,000	¥1,000
Genotyping of natural accessions from RIKEN BRC (per line)	¥9,400	¥9,400

(\*1) This refers to the use of the bioresource in research by a not-for-profit organization for not-for-profit academic purpose. Category I MTA shall be used.

(\*2) This refers to the use of the bioresource in research for the following a. - d. cases. Category II MTA shall be used.

- a. For research by for-profit organization
- b. For collaborative research between for-profit organization and not-for-profit organization
- c. For research by not-for-profit organization outsourced and sponsored by for-profit organization
- d. For for-profit research by not-for-profit organization including R&D with the aim of patent acquisition

(\*3) Volume discounts will be offered for the order of 10 vials/sets or more of the multiple resources of the same fee at a time.

(\*4) Shipping costs will be charged to overseas users.

### Volume Discount for Individual seeds, Pooled seeds and Individual plant DNA

◆ For the category of the Individual seeds and the Individual plant DNA

Order quantity	Discount
1 - 9 vials	0%
10 - 19 vials	10%
20 vials or more	20%

◆ For the category of the Pooled seeds

Order quantity	Discount
1 - 9 sets	0%
10 - 19 sets	10%
20 sets or more	15%