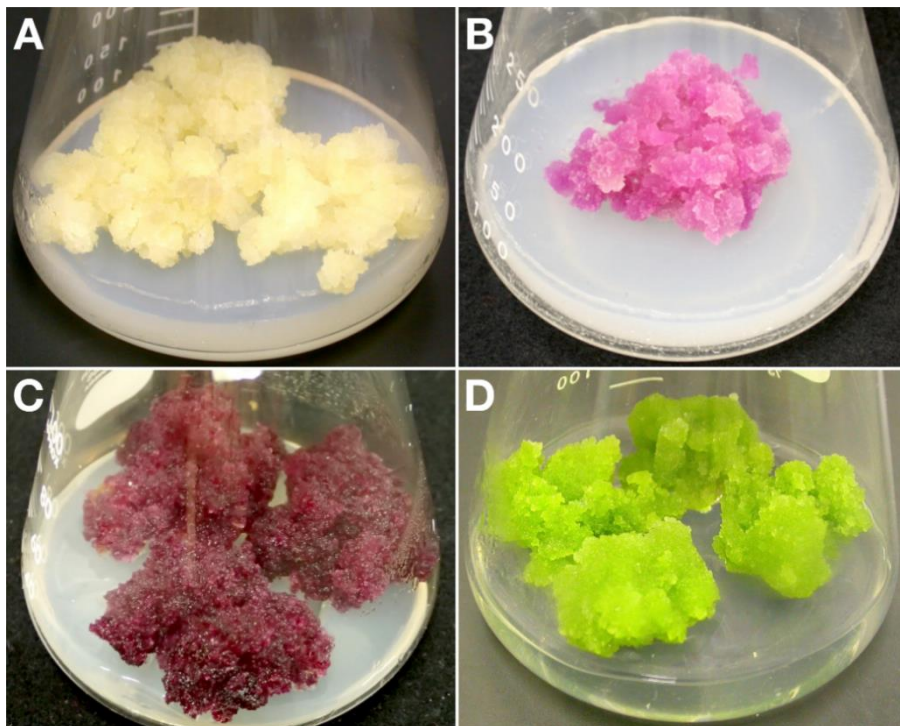


User's Guide

Plant Resources in RIKEN BRC stock

(2019)



Colorful plant cell cultures

A: rpc00007 *Phytolacca americana* PAW

B: rpc00006 *Phytolacca americana* PAR (betacyanins)

C: rpc00058 *Glehnia littoralis* GIV (anthocyanins)

D: rpc00051 *Glycine max* DG330 (isoflavones)



Experimental Plant Division
RIKEN BioResource Research Center



1. Project Summary

RIKEN BioResource Research Center collects, preserves and distributes biological materials of model organisms to promote the life sciences. Since 2002, we have provided Arabidopsis mutants/natural accessions, plant cultured cells and DNA materials to the international plant research community. Resources of experimental monocot plant, *Brachypodium distachyon* are also distributed.

2. Ordering Procedure

2-1. Orders

At the time of ordering our biological resources, please inform us your name, institution, mailing and e-mail addresses. If you are a student or postdoc, information of your laboratory head is also required. In order to make your order, follow the instructions on our website or please enquire by e-mail.

2-2. Quality Control

We perform quality control on the resources prior to shipping your order. We will inform you for the results when we find any problem. See more details at our website. https://epd.brc.riken.jp/en/quality_control.

2-3. Shipments

We send 50 or 400 seeds for each Arabidopsis line, 100 ng of plasmid DNA for each DNA material, and enough amounts of cultured cells placed on agar plates. They are usually shipped within one month after we receive your order.

2-4. User Fees

We ask the recipients to bear all shipping and handling costs. The fees for biological materials are shown in the fee table.

2-5. Billing and Payment Information

BRC invoices are emailed to you when we are ready to ship, often after performing quality control. We accept any of credit card payment, electronic transfers, and check. Your payment ensures that the Experimental Plant Division ships your order.

3. Contact Information

Experimental Plant Division
RIKEN BioResource Research Center
3-1-1 Koyadai, Tsukuba, Ibaraki 305-0074, Japan
FAX: +81-29-836-9053
E-mail: plant@brc.riken.jp
HP: <https://epd.brc.riken.jp/en/>

When you utilize our resources and publish the results of your research, please refer to the origin of the resources. Your cooperation is much appreciated.

Fees for Biological Materials

As of June 2019 (CCY: JP yen)

Resource Name	Not-for-profit academic purpose ^{*3}	For-profit-research purpose ^{*4}
Arabidopsis seed		
Individual seed stock (50 seeds per line) ^{*2}	3,100	6,200
Individual seed stock (400 seeds per line)	6,300	12,600
Set of individual seed stocks (100 lines)	121,400	242,800
Set of pooled seeds for screening (per pool set) ^{*2}	6,200	12,400
Set of individual seed stocks (set of 50 lines from each seed pool)	62,000	124,000
Brachypodium seed		
Individual seed stock (50 seeds per line) ^{*2}	6,100	12,200
Plant DNA		
Individual plant DNA ^{*2}	3,100	6,200
Set of individual plant DNA	121,400	242,800
DNABook™ ^{*1}	35,640	—
Plant cell culture (per line) ^{*1}	6,440	12,880
Service		
Culture media for subculture of suspension cell (per unit)	1,000	1,000
Genotyping of natural accessions obtained from RIKEN BRC (per line)	9,300	9,300
Quarantine certificate (per certificate)	16,600	16,600

^{*1}Freight charges are paid by the consignee.

^{*2}Volume discount is applied for those orders of 10 vials/sets or more of Individual seed stocks (50 seeds), Set of pooled seeds and Individual plant DNA. See below.

^{*3}This refers to the use of our bioresource in research for not-for-profit academic purpose by a non-profit organization.

^{*4}This refers to the use of our bioresource; for research to be conducted by for-profit organizations; for collaborative research between for-profit organization and not-for-profit organization; for research by not-for-profit organization outsourced and sponsored by for-profit organization; for for-profit research by not-for-profit organization including R&D with the aim of patent acquisition.

Volume Discount for Individual seeds, Pooled seeds and Individual plant DNA

◆ For the category of the Individual seeds and the Individual plant DNA

Order quantity	Discount
1 - 9 vials	0%
10 - 19 vials	10%
20 vials or more	20%

◆ For the category of the Pooled seeds

Order quantity	Discount
1 - 9 sets	0%
10 - 19 sets	10%
20 sets or more	15%